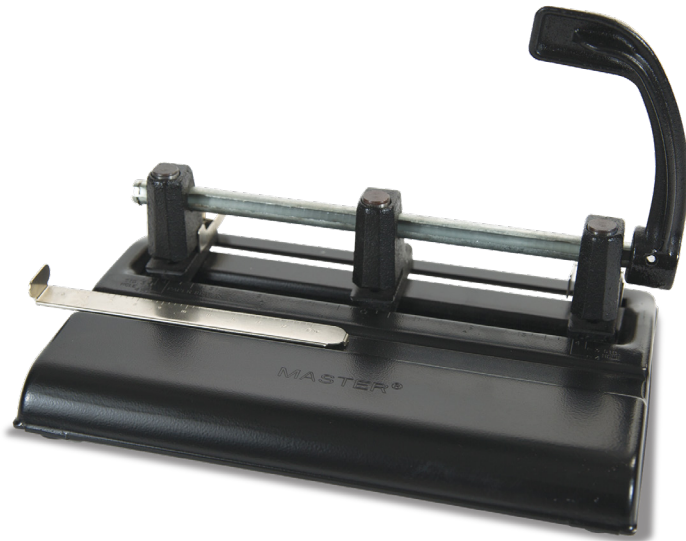




Martin Yale™

Master® Model 1325B Hole Punch



- Accepts 2 to 7 punch heads for multiple formats (comes standard with 3 punch heads)
- Pre-set to punch 9/32" holes for convenient 2 and 3-hole punching
- Margin depth guides adjust for custom punching needs
- Includes high-capacity chip pan and non-skid feet

Punches up to 40 sheets of
20 lb bond paper

Adjustable paper guide for
easy setup

SPECIFICATIONS:

Model No.:	1325B
Hole Diameter: (inch)	9/32
Capacity: (20 lb. paper/sheets)	40
Electrical: (volt)	Manual
Dimensions: (W x D x H inch)	11 x 7.25 x 7
Weight: (approx. lbs)	5.8