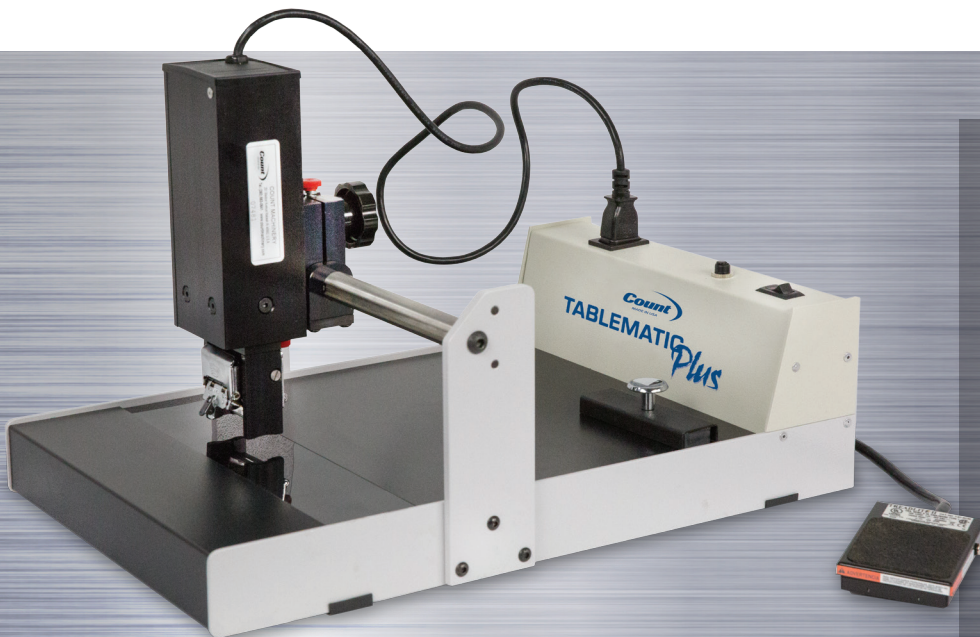




TableMatic Plus

NUMBERING



Economical numbering with simple foot pedal operation

Crash multiform or individual sheet numbering

Number virtually anywhere on the paper

Backstop and side rails for consistent registration

Multiple features for quality numbering with easy operation

This simple-to-use numbering solution accommodates small jobs for quick delivery to your customers.



Simple Foot Pedal Operation



Magnetic Back Stop



Numbering Head Wheel With Font Style Gothic (7)

The COUNT™ TableMatic Plus offers an easy, economical numbering solution that's ideal for small jobs that turn quickly. The TableMatic Plus can be used for crash numbering of NCR forms up to 6 parts, or numbering virtually anywhere on the paper. The simple foot pedal operation means anyone in your shop can use it, yet offers a range of features: drop zeros, a repeat function, numbering head pressure adjustment and a patented self-inking cartridge. Plus, a magnetic backstop and built-in side rails ensure consistently accurate registration.



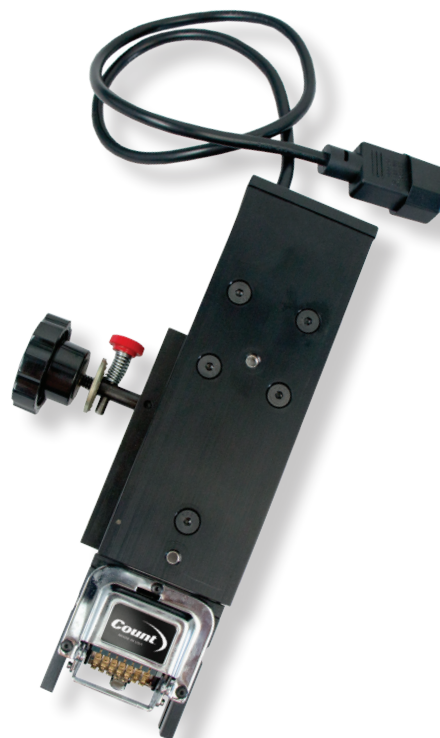
TableMatic Plus

Hand-feed numbering system with simple foot-pedal operation for on-demand numbering.



Features

- Low-volume numbering with simple manual operation.
- Features 11-1/2" x 16" work base.
- Choice of black or red ink.
- Patented self-inking disposable cartridges – no re-inking required!
- Approx. 25,000 impressions per cartridge.
- Number horizontal or vertically by rotating numbering head on cross bar.
- Includes reliable electric, Gothic wheel forward numbering head – with 7 digits, 4 drop zeros and multiple repeats.
- Number single sheets, or crash number up to a 6-part carbonless form.
- Magnetic backstop and built-in side rails ensure positive registration.



Specifications

Model:	TableMatic Plus
Model No.:	TMP
Paper Feed:	Hand-Feed
Weight:	25 lbs (11 kg)
Max Numbering Speed: (sheets per hour)	Based on operator
Paper Weight Range: (gsm)	60 - 350
Dimensions:	22.0 L x 16.0 W x 10.0 H in (55.9 x 40.6 x 25.4 cm)
Max Sheet Size:	24.0 L x 11.5 W in (61.0 x 29.2 cm)
Min Sheet Size:	3.0 L x 3.0 W in (7.6 x 7.6 cm)
Electrical:	115 V, 60 Hz, 20 A or 230 V, 50 Hz, 20 A
Made in:	U.S.A.



COUNT print finishing equipment is manufactured by Martin Yale Industries, LLC.
251 Wedcor Avenue, Wabash, Indiana 46992
260-563-0641 | Fax: 260-563-4575 | www.martinyale.com



Martin Yale™